

# Common Platform Admin Portal Deployment Guide

This guide is intended to provide you with the information you need to build, install, configure, and deploy the Project HealthDesign Common Platform Admin Portal web application.

## ***Server Installation***

1. Download the Glassfish v2.1 application server (if this server component is not already installed on your machine).

The server may be downloaded from the Glassfish community website:

<https://glassfish.dev.java.net/downloads/v2.1-b60e.html>

2. Install the application server application. The default settings for the Java application server can be used. For information on enabling SSL on Glassfish v2, please see the instructions at the following URL:  
[http://blogs.sun.com/enterprisetechtips/entry/using\\_ssl\\_with\\_glassfish\\_v2](http://blogs.sun.com/enterprisetechtips/entry/using_ssl_with_glassfish_v2).

## **The Default Application Accounts**

When the Common Platform schema is installed, a default user is installed in the user table. A default application is also installed in the application table. This account information is used by the Admin Portal application by default.

### Default User

**Username:** superuser

**Password:** GoeD89

### Default Application

**Application ID:** 1@1.3.6.1.4.1.30291.0.1

**Password:** tlawR69

## ***Building the Common Platform Admin Portal from Source [Optional]***

The Project HealthDesign Common Platform Admin Portal is a Java EE web application. The source code for the application is available as a Netbeans project. This section will describe how to load the Common Platform Admin Portal Netbeans project and compile it for deployment. This step is optional, as a compiled .WAR file (cpadminportal.war) is already available for deployment.

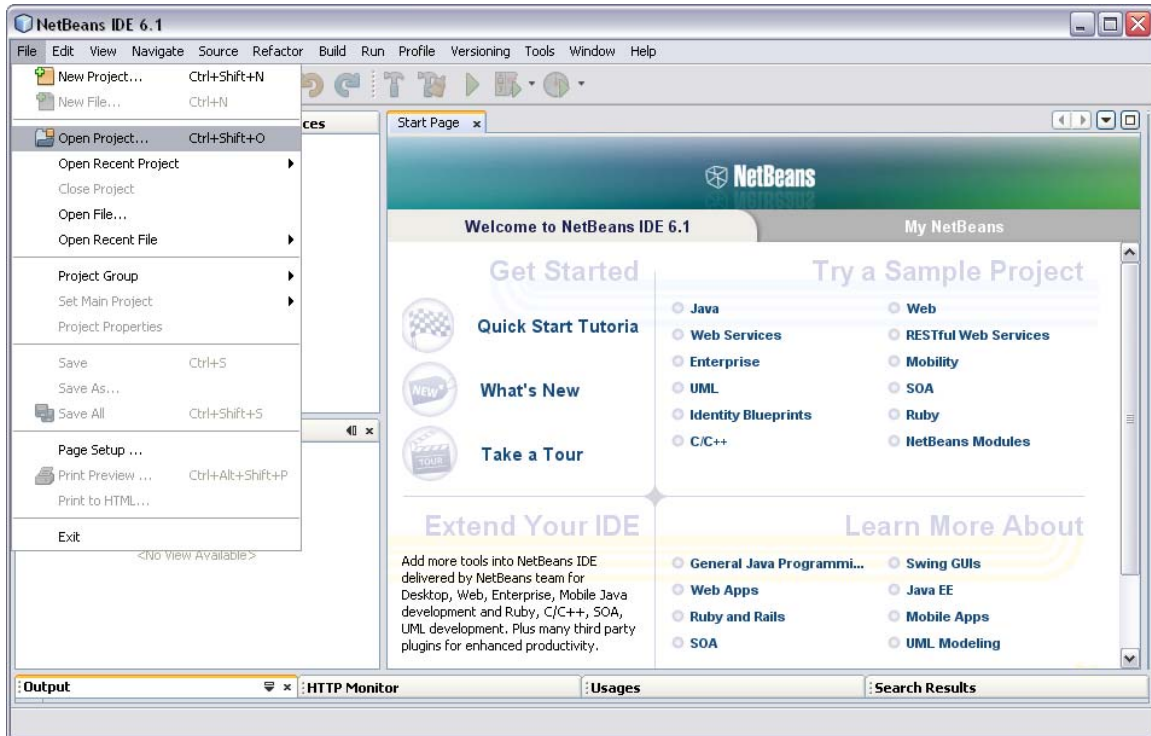
1. Start the Netbeans IDE (minimum version, 6.1). Choose **File** → **Open Project...**



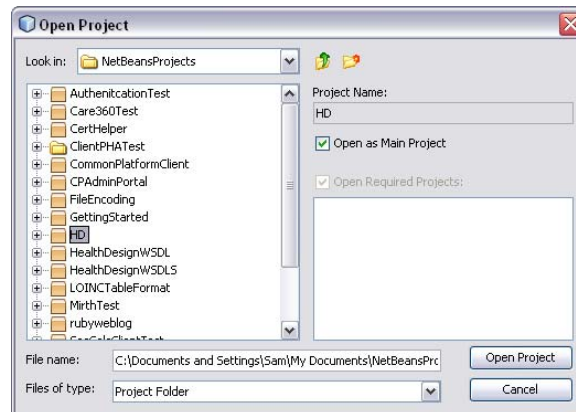
This work is licensed under a [Creative Commons Attribution 3.0 License](https://creativecommons.org/licenses/by/3.0/).

© 2009 Board of Regents of the University of Wisconsin System

## Project Health Design – Common Platform Deployment Guide



2. Browse to the Netbeans project file **CPAdminPortal** and click the **Open Project** button.

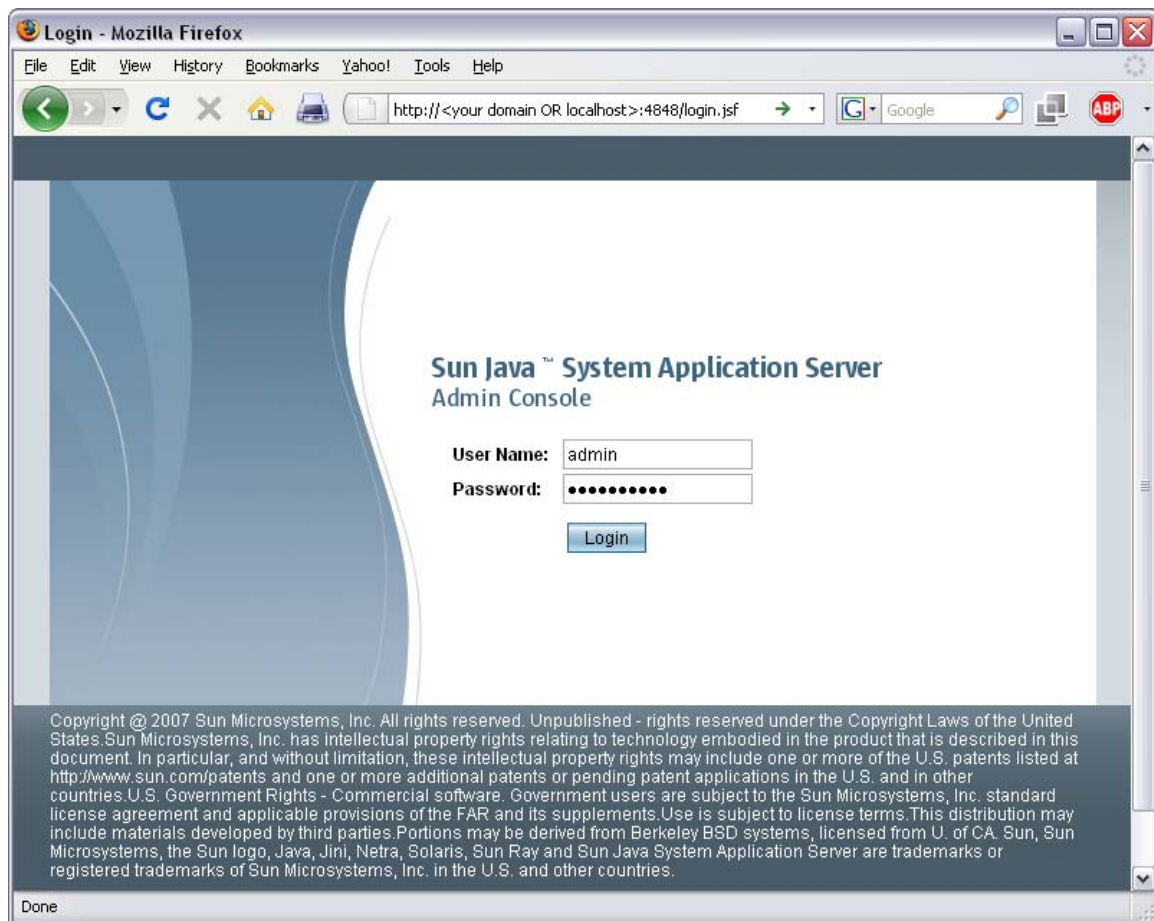


3. If CPAdminPortal is not the main project, make it so by choosing HD from the **File** → **Set Main Project** menu.
4. To compile the project and create a deployable .WAR file, select **Build** → **Build Main Project**.
5. Netbeans compiles the source code and creates an CPAdminPortal.war distribution file. The file is written to the /dist directory of the CPAdminPortal Netbeans project directory.

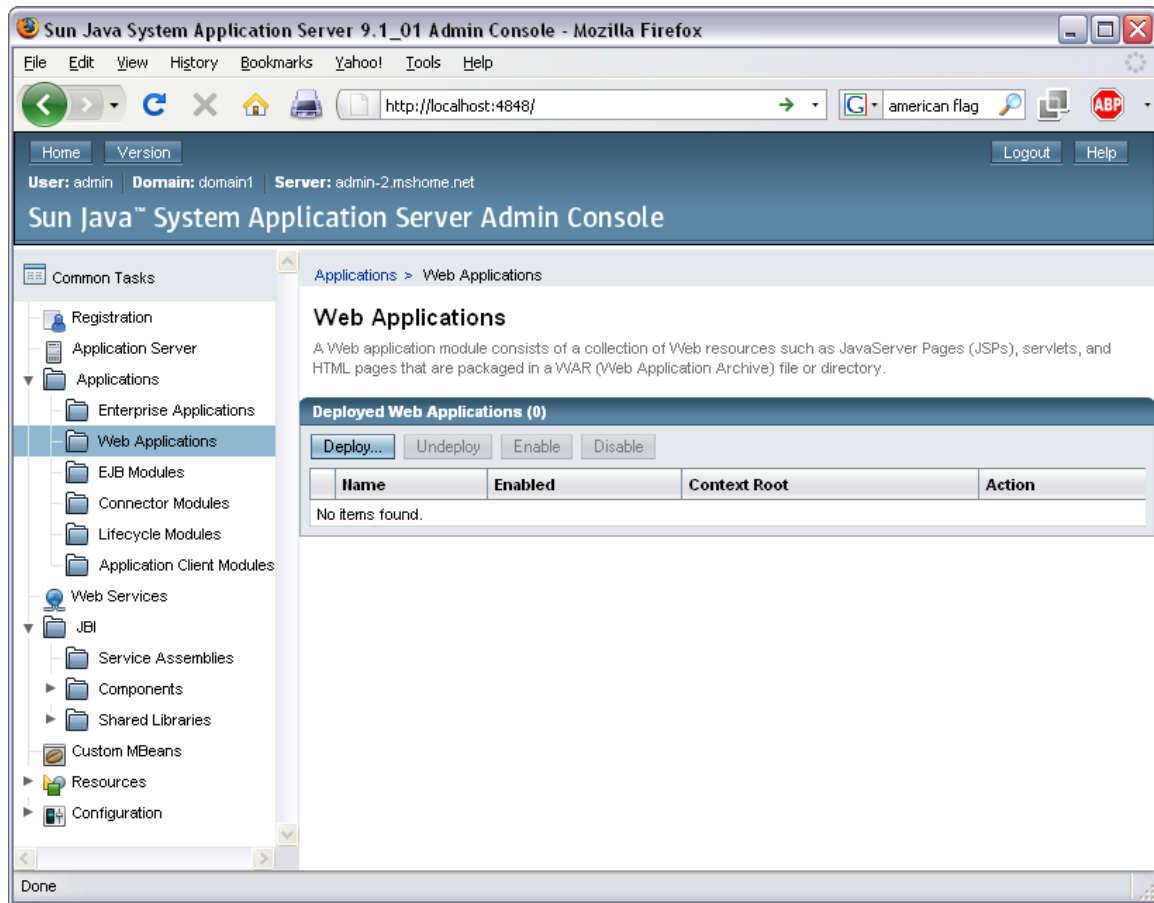
## ***Deploy the Common Platform Admin Portal Application***

This section will describe how to deploy the Common Platform application to the GlassFish Java application server.

1. Ensure the GlassFish application server is running. Using a browser, open the Glassfish administration web application by pointing the browser to `http://<your domain OR localhost>:4848/login.jsf`



2. Select the Web Applications node from the left-hand navigation window.



3. Click the **Deploy...** button in the Web Applications table. The Deploy Enterprise Applications/Modules form is displayed.
4. In the Location field, ensure that the option **Packaged file to be uploaded to the server** is selected and click the field's **Browse** button.
5. Browse to the CPAdminPortal.war file and select **Open**. This file is distributed along with the Common Platform Source package and can be located in the /dist directory of the HD Netbeans project directory.
6. You may use the default values supplied on the Deploy Enterprise Applications/Modules form.
7. Click the OK button to deploy the Common Platform application to the application server. The URL for the newly deployed application will be: `http://<your domain>:8080/CPAdminPortal/`.

The Common Platform should now be up and running.